

940 AIR REFUELING WING



MISSION

LINEAGE

940 Troop Carrier Group, Medium established and activated in the Reserve, 15 Jan 1963
Organized, 11 Feb 1963
Redesignated 940 Troop Carrier Group, Heavy, 1 Apr 1965
Redesignated 940 Air Transport Group, Heavy, 1 Dec 1965
Redesignated 940 Military Airlift Wing, 1 Jan 1966
Redesignated 940 Tactical Airlift Group, 1 Apr 1972
Redesignated 940 Air Refueling Group, Heavy, 1 Jan 1977
Redesignated 940 Air Refueling Group, 1 Feb 1992
Redesignated 940 Air Refueling Wing, 1 Oct 1994
Redesignated 940 Wing, 1 Jul 2009

STATIONS

McClellan AFB, CA, 11 Feb 1963
Mather AFB, CA, 1 Jan 1977
McClellan AFB, CA, 1 Jul 1993
Beale AFB, CA, 1 Oct 1997

ASSIGNMENTS

349 Troop Carrier Wing, 11 Feb 1963
452 Military Airlift (later, 452 Tactical Airlift; 452 Air Refueling) Wing, 26 Jan 1968
Fourth Air Force, 1 Oct 1994
Tenth Air Force, 1 Oct 2008

WEAPON SYSTEMS

C-119, 1963-1965
C-124, 1965-1972
C-130, 1972-1976
KC-135, 1976
RQ-4, 2008

COMMANDERS

Col Harry C. Mailey, 11 Feb 1963
Col Sidney S. Novaresi, 21 Mar 1967
Col Frederick W. Bly, 2 Aug 1969
Col Harry C. Mailey, 22 Mar 1971
Col John A. Forsythe, 14 Sep 1971
Col Alan G. Sharp, 26 Nov 1972
Col Hans J. Eriksen, 24 Sep 1976
Col Robert Q. Head, c. 15 Aug 1980
Col Peter T. Pomonis, 3 Aug 1986
Col Donald E. Schell, 22 Jul 1989
Lt Col Edward C. Whalen Jr., 7 Aug 1992
Col David A. Pasero, 1 Nov 1992
Lt Col Marvin D. Alexander, 4 Nov 1994
Col Randall W. Young, 8 Jan 1995
Col Betty L. Mullis, 5 May 1996
Col Thomas M. Gisler, Jr, 15 Apr 1998
Col James L. Kerr
Col Kevin G. Cavanagh, May 2011
Col John E. Trnka Jr., May 2014
Unkn, 28 Apr 2016
Col Craig C. Peters, 13 Jun 2016

HONORS

Service Streamers

Campaign Streamers

Southwest Asia
Defense of Saudia Arabia

Armed Forces Expeditionary Streamers

Decorations

Air Force Outstanding Unit Awards
23 Dec 1964-22 Jan 1965
1 Jan 1979-31 Dec 1980
1 Mar 1982-29 Feb 1984

31 Jul 1989-30 Sep 1990
1 Oct 1995-30 Sep 1997
1 Oct 1997-30 Sep 1999
1 Oct 1999-30 Sep 2001
1 Oct 2001-30 Sep 2003
1 Oct 2003-30 Sep 2005
1 Oct 2005-30 Sep 2007
1 Oct 2007-30 Sep 2008

Republic of Vietnam Gallantry Cross with Palm
1 Apr 1966-31 Mar 1972

EMBLEM

940 Military Airlift Group: Gules, a helmet closed couped or garnished sable above a demi-eagle issuant from sinister argent fimbriated of the third, all within a diminished bordure silver.

SIGNIFICANCE: The emblem is symbolic of the Group. The colors of the emblem denote: white purity; red patriotism, gold association with the Wing. The bird is representative of flight and the warrior aggressiveness, valor and honor of our Armed Forces when threatened by an enemy. (Approved, 11 Dec 1968)



Approved, 10 Apr 2006

MOTTO

OPERATIONS

Activated in 1963, initially with Tactical Air Command as its gaining command. Flying C-119Gs, the group trained for and participated in air transport, airdrop, and airlanding operations in conjunction with Army airborne forces and provided air evacuation as needed.

The group took part in a number of tactical exercises both in the continental United States and Alaska, as well as abroad. The group also undertook disaster relief missions such as airlifting hay to snowed-in cattle in Montana in December 1964, as well as airlift for flood relief in northern California in December 1964 and January 1965.

The 940th was redesignated a Troop Carrier Group, Heavy on 1 April 1965. As a reflection of the new designation, the group acquired C-124 transports in June 1965, but continued to fly the venerable C-119 until September of that year. The group's gaining command also switched from the Tactical Air Command to the Military Air Transport Service (later Military Airlift Command). As part of its new status, the 940th flew missions to Canada, Puerto Rico, and the Dominican Republic, as well as other nations.

In 1965 missions shifted to augmentation of worldwide Military Airlift Command operations. In 1972 are turned to air transportation of airborne forces, equipment and supplies with delivery by airdrop, extraction, and airlanding. In the summer of 1965, the 940 converted from C-119s to C-124s. Retraining crew members in C-124s began at the same time the 940's hangar underwent a remodeling in order to accommodate the C-124. As aircrews became qualified and "Old Shakey," as the C-124 was affectionately called, underwent maintenance, the 940 began missions to SEA. On a typical flight, the C-124s took off from McClellan and landed at Travis where cargo was loaded. The aircraft then flew on to Hickam AFB, Guam, Wake, and Clark AB before its final destination at either Tan Son Nhut or Da Nang. The 940's reserve crews, composed of school teachers, insurance salesmen, farmers, and even civil service workers at McClellan, continued their important military jobs.

In Dec 1976, the 940 received its first KC-135 tanker in preparation for becoming an air refueling organization.

The 940th Air Refueling Group (Heavy) is a U.S. Air Force Reserve (AFRES) unit located at Mather Air Force Base, Sacramento, Calif. The unit directs the organizing, equipping and training of aircrews to locate, identify and refuel airborne aircraft worldwide and to support the Joint Chiefs of Staff Single Integrated Operations Plan Daily Alert with combat-ready KC-135 aircraft and crews. The 940th flies and maintains eight KC-135 Stratotanker aircraft. In addition to their alert commitment, 940th aircrew members, aircraft and support personnel provide air refueling to active duty U.S. Air Force, Air National Guard, AFRES, U.S. Navy and U.S. Marine aircraft.

The 940th AREFG functions under the direction of the 452nd Air Refueling Wing, March AFB, Calif., which, in turn, functions under the direction of Tenth Air Force (Reserve), Bergstrom AFB, Texas, and Headquarters AFRES, Robins AFB, Ga. If mobilized, the 940th would be gained by the Strategic Air Command. More than 900 reservists are assigned to the 940th. Of these, 164 are Air Reserve Technicians who, with approximately 20 civilian employees, maintain the unit's day-to-day operations.

Subordinate units of the 940th AREFG are the 314th Air Refueling Squadron, 940th Consolidated Aircraft Maintenance Squadron, 940th Combat Support Squadron, 940th Civil Engineering Squadron, 936th Civil Engineering Squadron, 940th Headquarters Squadron, 940th USAF Clinic, 940th Information Systems Squadron and the 940th Weapons System Security Flight. In addition, the 940th Consolidated Base Personnel Office provides personnel processing for two other Air Force Reserve units: the 406th Combat Logistics Support Squadron, assigned to McClellan AFB, Calif., and Detachment 1, 12th Contingency Hospital, a Fourth Air Force-gained unit at Mather.

Since Jan 1977, it has performed air refueling missions worldwide. Maintained an alert responsibility for Strategic Air Command to Sep 1991.

In 1986, the tankers were converted to the KC-135E configuration with more powerful, energy-efficient and quieter engines. Other modifications were also made to keep the tankers flying well into the 21st century.

After Saddam Hussein invaded Kuwait, the 940th was one of the first Air Force Reserve units in theater when it voluntarily deployed on 10 August 1990 as part of a provisional air refueling wing. Over 300 unit members were later recalled to active duty and deployed around the U.S. and the world. The 940th voluntarily deployed to Saudi Arabia on August 10, 1990, just eight days after the invasion of Kuwait. It was the first Air Force Reserve unit to establish ground operations there. The 940th became part of the 1701st Air Refueling Wing (Provisional), a unique unit consisting of Air Guard, Air Force and Air Force Reserve refueling units working in partnership supporting Operation Desert Shield. Presidential callups began in December 1990 and affected eight of the 940th's ten units. Over 300 940th reservists were recalled to active duty and deployed to operating locations in the Middle East, Europe, and the United States in direct support of Operation Desert Storm. The last members of the Group returned in August 1991— fully a year later after the first had deployed.

In August 1991, the last 940th members returned to Mather Air Force Base from Saudi Arabia. Within the AFRES community, they earned the proud distinction "first in, last out" of the Middle East. September 1991 saw the deactivation and return of the 940 CES, which had deployed to four stateside locations during Desert Storm.

On September 28, 1991, the 940th saw the end of its alert mission as military organizations throughout the United States responded to a Presidential order to "stand down" its alert force.

940th crews, which had stood 24-hour alert year round since 1977, taxied the aircraft from the alert facility and turned them over to the maintenance squadron.

The 940th made history on December 4, 1991, as the first Air Force Reserve or Guard unit to air refuel the B-2 "Stealth" Bomber. The 940th worked with the 6510th Test Wing at Edwards AFB, Calif, from December 4-6 and performed air refueling missions to Test Wing standards.

On 1 June 1992, the 940th's gaining command became the newly activated Air Mobility Command when the SAC-era ended. As part of then-Air Force Chief of Staff McPeak's Objective Wing structure, the 940th was redesignated an Air Refueling Wing on 1 October 1994.

The unit moved from McClellan to Mather AFB, California on 1 February 1992 and remained there until July 1993. However the circle was completed when the group returned to McClellan due to the Base Realignment and Closure Commission decision to close Mather. Due to other Base Realignment and Closure Commission decisions, the Wing will move yet again to Beale AFB, California in the near future.

In 1992, 940th aircraft and crews deployed overseas to provide fuel to Africa-bound aircraft during Operation Restore Hope, the United Nations Somalian relief effort.

In 1993 the 940th deployed in support of Operation Uphold Democracy in support of Haiti. Bosnian operations.

In 1994 and 1996, the 940th deployed to Italy to provide air refueling to the allied forces engaged in peacekeeping efforts in the skies above the former Yugoslavia.

19 Nov 96: Ground-breaking ceremony for new facilities at Beale Air Force Base.

In 1997 the unit participated in flood relief operations for Northern California and the Midwest. Also in 1997, Wing Medical personnel deployed to Honduras to train and provide medical care to people in rural villages.

May 1998 Change of station from McClellan Air Force Base, Calif. to Beale AFB, CA (First unit aircraft arrives at Beale on 18 Feb 98).

In May 1999 more than 170 members of the 940th were called to active duty under a presidential selected reserve call-up signed April 27 by President Clinton. These members deployed to Europe and flew missions support of NATO's Operation Allied Force

Sept 2001 940 crews and aircraft support NORAD contribution to Operation Noble Eagle homeland defense.

Oct 2001 Start of Pacer CRAG conversion (glass cockpit/advanced navigation system/minimum

crew of three). April 2002 Pacer CRAG conversion complete.

2002-2003 Joint Forge, Istres Air Base France.

2002-2003: Unit deployed as part of Operation JOINT FORGE to Istres Air Base, France, supporting Global War on Terror

Summer 2005: Completes conversion from KC-135E to KC-135T model

November 2005: President George Bush approves the 2005 Base Realignment and Closure Commission recommendations. BRAC determines the 940 Air Refueling Wing will change missions from flying the KC-135 to the RQ-4 Global Hawk, unmanned high-altitude reconnaissance aircraft and other command and control missions

Nov. 27, 2005- Jan. 7, 2006: Four aircraft and nearly 120 Citizen Airmen from the 940 Operations and Maintenance Groups deployed to Incirlik Air Base, Turkey, in support of the Global War on Terror

2005-2007: Unit continues support of Global War on Terrorism through Operations NOBLE EAGLE, ENDURING FREEDOM and IRAQI FREEDOM

Jan. 29, 2008: The first two of the 940's eight KC-135Rs leave Beale Air Force Base, Calif., for Seymour Johnson Air Force Base, N.C.

May 3, 2008: The last two KC-135Rs leave Beale Air Force Base, Calif., and the 940 Air Refueling Wing after 31 years of distinguished service. The aircraft are reassigned to the 916th Air Refueling Wing, Seymour Johnson Air Force Base, N.C.

2008-Present: Unit continues to support the Overseas Contingency Operations through Operations IRAQI FREEDOM/NEW DAWN and ENDURING FREEDOM.

Air Force Reserve Command has one less air refueling unit with the redesignation of the wing located at Beale Air Force Base, Calif. Maj. Gen. Frank Padilla, 10th Air Force commander, presided over a ceremony July 11 re-designating the 940 Air Refueling Wing as the 940 Wing. He lauded wing Reservists for embracing their new mission and for their commitment to the Total Force Integration initiative. "No one has been better than the 940 Wing, teamed with the 9th Reconnaissance Wing, to embrace change and to embrace the total force initiative," General Padilla said.

"It has become AFRC's showcase for TFI." The wing is the first in the command "to embrace the combat capabilities in four major core TFI areas: distributed ground system; high-altitude intelligence, surveillance and reconnaissance; air operations center; and Air Force forces operations." General Padilla said the 940 WG will continue to evolve as mission requirements change. "It was an act of wisdom to call it the 940 Wing instead of naming it a reconnaissance

wing, command and control wing or ISR wing because we are not constrained by limitations,” General Padilla said.”

Our wing will be able to grow and respond to our country’s Air Force missions and requirements, and I am very proud of that.” Col. Jeffrey Mineo, 940 WG commander, thanked members of the wing for embracing the new missions. “Today has a twofold purpose: One is to mark progress on the path to transformation, but we also have to recognize that today commemorates our proud heritage and traditions from over 35 years of history and of safe flying,” Colonel Mineo said. “There has been no class A mishaps around the Sacramento area. That is a marvelous achievement.” Colonel Mineo asked Airmen who had served with the 940 when it was at both Mather and McClellan AFBs in California to stand and be recognized for their accomplishments and the tradition they bring to the new wing.

The wing moved from Mather to McClellan in 1993 and from McClellan to Beale in 1998. “These people have pioneered the change for us to get us to the point where we are today,” Colonel Mineo said. “I relied on these people to carry us through a difficult time.” Although changing from a KC-135 air refueling mission has been difficult, Colonel Mineo said the 940 Airmen have stepped up to ensure success of the wing’s new missions. “In the year and a half that I’ve been here, I have seen the folks do some amazing things,” he said. “I am truly humbled to be part of this major milestone in the history of the 940.” 2009

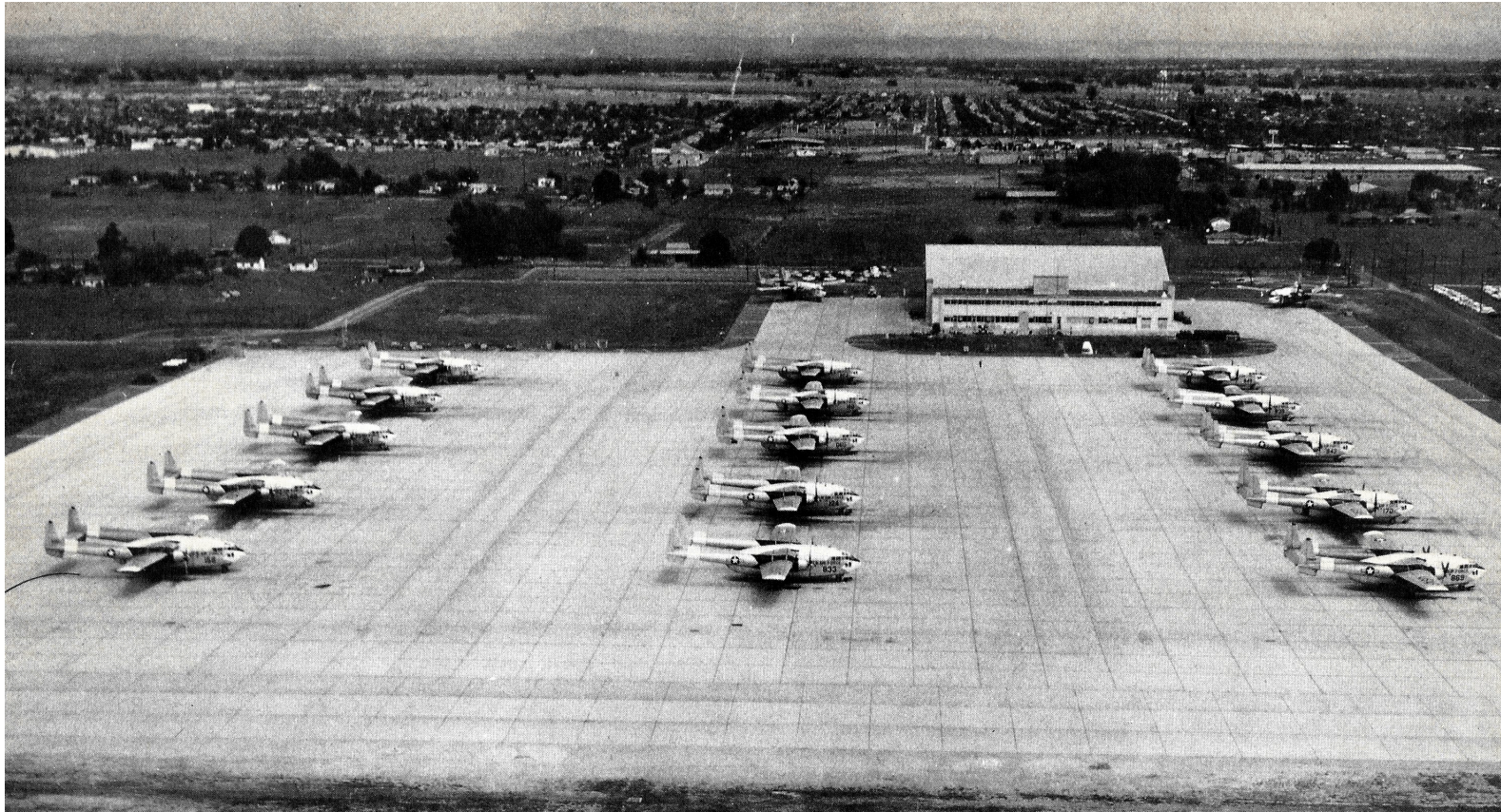
January 2010: The 940 sends personnel to the Haiti earthquake relief effort in Operation RESTORE HOPE.

March-April 2011: The 940 participates in Operations TOMODACHI and PACIFIC PASSAGE as part of the Japanese humanitarian relief efforts.

March 2011-Present: The wing's ISR mission participates in Operation ODYSSEY DAWN in Libya.

May 1, 2011: The 940 Wing gains the 718th Intelligence Squadron under the 940 Operations Group.

In 2016, 940 WG reverted to its air refueling mission and became the 940 ARW again. It continues its worldwide support mission from its base in northern California.



**940th TROOP CARRIER GROUP (RESERVE)
McCLELLAN AIR FORCE BASE
CALIFORNIA**

Air Force Unit Histories

Created: 27 Oct 2020

Updated: 21 Jul 2023

Sources

Air Force Historical Research Agency. U.S. Air Force. Maxwell AFB, AL.

The Institute of Heraldry. U.S. Army. Fort Belvoir, VA.

Air Force News. Air Force Public Affairs Agency.

Unit history. *McClellan AFB, CA, A Pictorial History*. 1982.